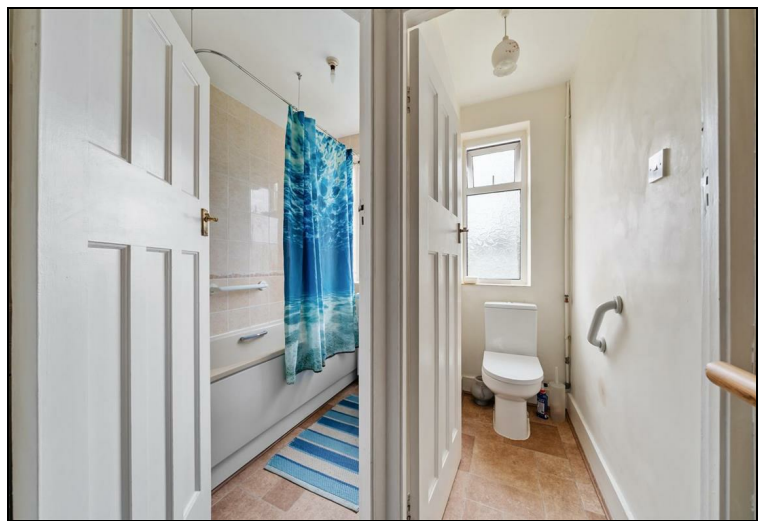


## Westway Raynes Park, SW20 9LT

£750,000 Freehold



**WESTWAY, SW20 9LT** - This well maintained, **THREE DOUBLE BEDROOM**, un-extended 1930's Blay House has a lovely 54'ft West Facing rear garden and is located within easy access to both Raynes Park and Motspur Park Stations. An excellent blank canvas for an incoming buyer to extend and finish to their own desired tastes subject to the usual planning consents. There are two good sized separate reception rooms, a neutrally decorated kitchen, three bedrooms and a separate bathroom and w.c.



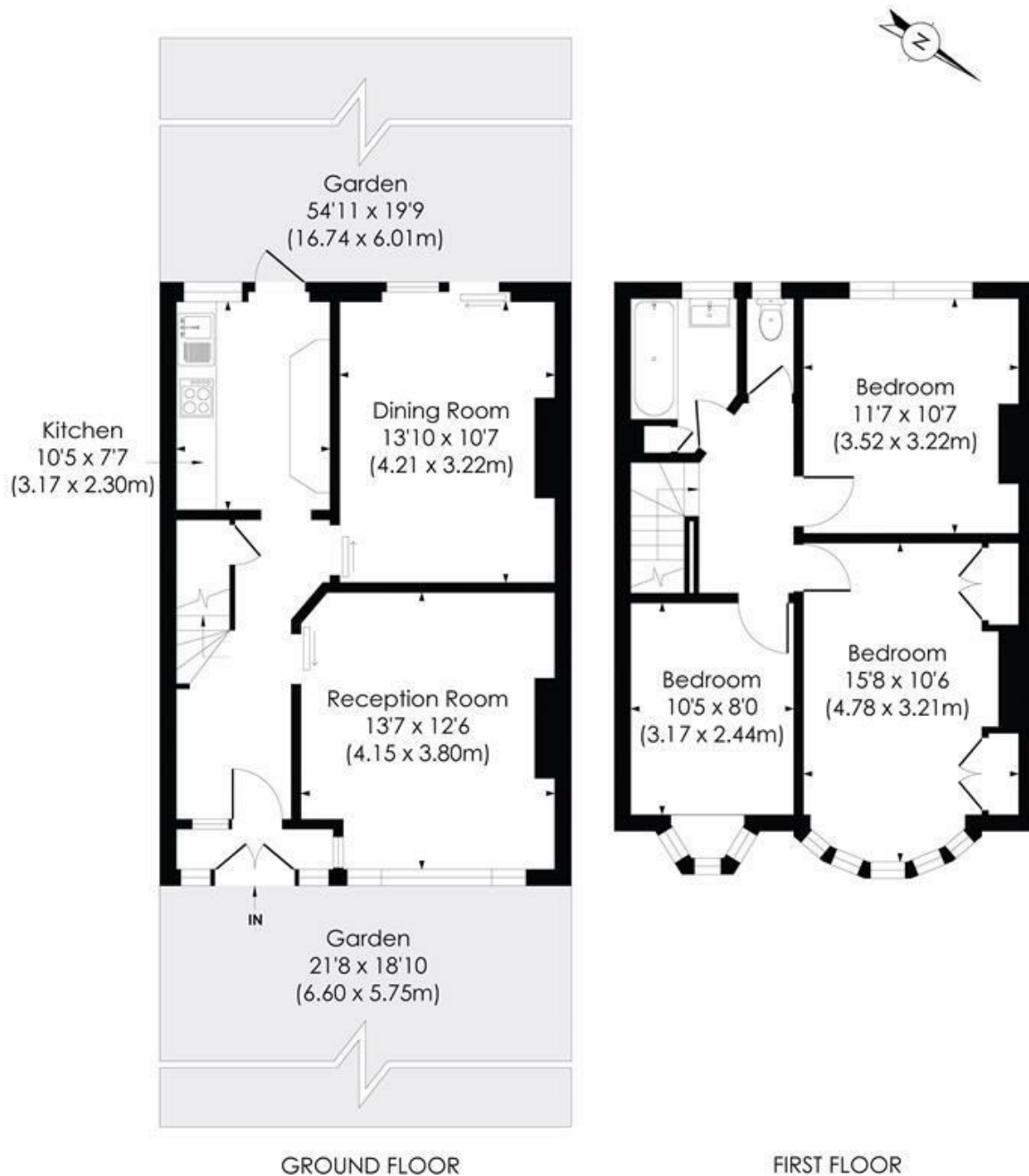
Although these particulars are believed to be correct, their accuracy is not guaranteed and they do not form part of any contract.

**Celebrating 30 years  
of successful Sales and  
Lettings in Merton**

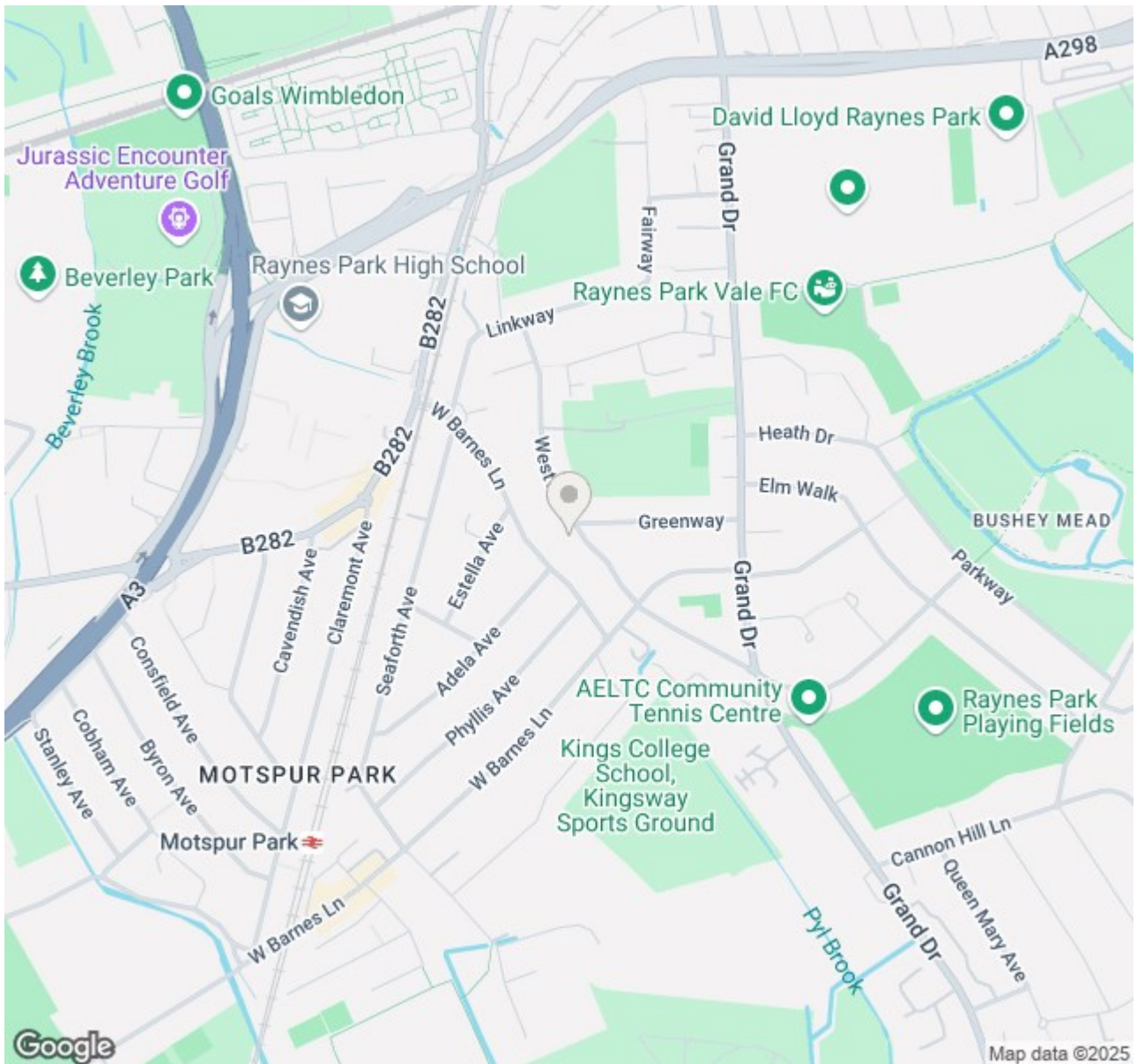


## WESTWAY, SW20

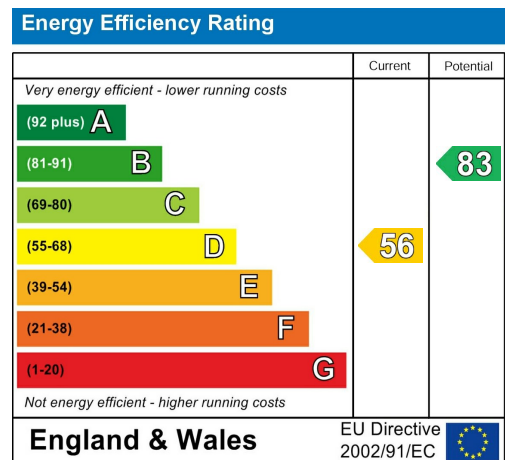
Approx. Gross Internal Floor Area  
**1014 Sq. ft/94.16 Sq. m**



© Pixangle Property Marketing Ltd. info@pixangle.com Tel: 0208 870 2118



- WESTWAY, SW20 9LT
- Three Double Bedroom - Un Extended Blay House
- 54'ft West Facing Rear Garden
- Excellent Potential to finish and extend s.t.p.p
- Well Maintained Throughout
- Two Separate Reception Rooms
- Neutrally Decorated Kitchen and Bathroom
- Easy Access to Raynes Park
- Easy Access to Motspur Park
- Merton Council Tax Band - E - EPC - D



For Free Mortgage Quote and Best Mortgage Rates, call Ellisons Mortgage Advisor on 0208 944 9595



Although these particulars are believed to be correct, their accuracy is not guaranteed and they do not form part of any contract.

Celebrating 30 years of successful Sales and Lettings in Merton

